



## Capabilities and Company Overview

*Innovative coatings to  
extend the life of critical equipment*



**LOCTITE**  
*Approved Applicator*

[www.avweld.com.au](http://www.avweld.com.au)

V201808

### Complete Surfacing Solutions

- Hardfacing and surface engineering to extend life of critical equipment
- Large machine shop
- Thermal spray, welding and composite coatings
- Machining, grinding, fabrication, design and engineering
- Head office in Melbourne (Laverton North)
- 24 hour operation when required
- Access to worldwide materials engineering expertise

Industry	Equipment Repaired/Manufactured
<b>Mining &amp; Resources</b>	Conveyor Pulley Lagging, Pumps, Vacuum Pumps, Pistons, Chutes, Buckets, Teeth, Valves,
<b>Pulp &amp; Paper</b>	Roll Covers, Roll refurbishment, Pumps, Rotary Valves, Boilers, Vessels, AbrasaPlate pulper liners, AbrasaPlate screen and sorter bodies, Vacuum Pumps,
<b>Woodchip</b>	Face Plates, Anvils, Chipper Knives, Counter Knives
<b>Bulk Material Handling</b>	Rotary Valves, Conveyor Pulley Lagging, Transport Screws, Buckets, Chutes, Conveyors, Hoppers
<b>Timber, MDF</b>	Bed Plates, Glue Blenders, Pistons, Saw Guides
<b>Cement</b>	Rotary Valves, Chutes, Hoppers, AbrasaPlate liners, Ducts, Hammers, Boiler Parts
<b>Steel Industry</b>	Rolls, Grip Coatings, Bearing Chocks, Shafts
<b>General Engineering</b>	Pumps, Shafts, Valves, Vessels, General Wear Components, Mixers, Rolls, Rotating Components
<b>Quarrying</b>	Crusher shells, shafts, AbrasaPlate wear plate, AbrasaStuds,



## Machine Shop

Equipment	Capacity
Overhead Cranes	60 tonnes total, 10m clearance
Lathes	Up to 1.4m swing, 10m length
Vertical Borers	30 tonnes on the table, dia 3.0m
Horizontal borer	3m x 5m x 4m
Cylindrical grinders	10m length, 1.5m dia
Roll Grinder	6m length
Drills	Up to 1.5 x 3.1 x 2.0m
Surface Grinders	600mm x 2.5m
Robotic Welding	12m x 3m x 3m, 9 axes
Metal spray booths	Up to 8m x 5m x 4m
Blast/Paint booths	Up to 15m x 5m x 4m
Balancing	15m long x 4.0m diameter

## Coating Technologies

Process	Applications
Plasma Transferred Arc (PTA) Welding	Tungsten Carbide deposits for extreme abrasion and impact positions
HVOF Thermal Spray	Versatile wear resistant deposits
Twin-Wire Arc Spray	Wide variety of metal spray deposits, especially for dimensional restoration, large scale wear prevention, and in-situ processing
DC-Plasma Spray	State-of the art high melting temperature ceramic coatings
Polyurethane coatings	Lightweight tough wear prevention coatings, highly specialised paper industry roll covers, pulley lagging
MIG Welding	Fabrication, general hardfacing
Tig Welding	Precision hardfacing
Powder Flame Spraying	Plastic and nylon coatings for specialist rolls in the printing and similar industries
Loctite Composites	Composite coatings for pumps, and industrial components

HVOF Thermal Spray



Large Vertical Borer – 3.5m diameter





Machining  
(1.4m diameter x 11m length)



Cylindrical Grinding  
(1.8m diameter x 9m length)



Horizontal Borer  
(Table 6m x 3m x 3m)



Robotic Welding (10m  
x2m x2m)



**Product:** Rotary Valves

**Industries:** Cement, Wood Chip, Bulk Material Handling, Asphalt, Coal, Grain

**General Overview:** Heavy and light duty rotary valves manufactured or repaired. Suitable for the harshest environments

**Expected life extension:** 4-8 times



- One of Avweld's main areas of focus
- Super-heavy duty design based on 30 years of industry experience
- New manufacture and reclamation of any RV
- Consulting and advice on setup and operation
- Tungsten carbide rotor vanes, housing bores, seal journals
- Diamond ground parts for precise clearances
- "Set and forget" long life design
- Oversize heavy-duty motors and bearings



**Product:** *AbrasaPlate™ Wear Plate*

**Industries:** Various Industries

**General Overview:** A general purpose chrome-carbide overlay plate suitable for application in various positions. High impact and abrasion resistance

**Expected life extension:** 4+



## Overview

- Chrome carbide wear plate
- Weld overlay hardfacing on mild steel backing
- High wear resistance compared to stainless steel, Q&T steel
- Easy to form, weld, roll, cut
- Different grades for different applications
- Excellent impact resistance
- Available in sheet form or full fabricated assemblies

## Available Grades:

- **AP-3000** – General purpose for high abrasion and moderate impact
- **AP-7000** – Complex carbide plate with Niobium for extreme abrasion and moderate impact
- **AP-CF** – Smooth, crack free plate to reduce hang-up
- **AP-X** – cross hatch overlay plate for self protection and high impact applications
- **AbrasaPipe** – internally or externally hardfaced

## Common applications:

Chutes

Ducts

Fans

Truck beds

Screen plates

Transition segments

Elbows

Buckets

Hoppers

Crushers

## Common sizes (Hardfacing/backing thickness, mm)

3 on 3	4 on 4
4 on 6	4 on 6-X
4 on 8	5 on 8
6 on 6	6 on 6-CF
6 on 8	6 on 8-X
8 on 8	8 on 8-CF
9 on 10	9 on 10-X
9 on 16	12 on 12
17 on 12	20 on 10

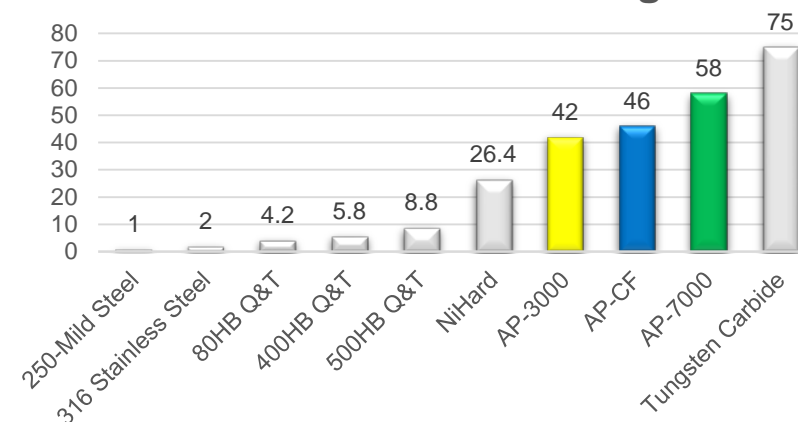
## Standard sheet sizes

1.5 x 3.0m (4.5m<sup>2</sup>)

2.2 x 3.0m (6.6m<sup>2</sup>)



## Wear Resistance Rating



Cross section of AbrasaPlate



**Product:** *AbrasaPlate™ Wear Plate*

**Industries:** Various Industries

**General Overview:** A general purpose chrome-carbide overlay plate suitable for application in various positions. High impact and abrasion resistance

**Expected life extension:** 4+



*Rolled AbrasaPlate*



*Chip Transfer Chute*



*Steel mill coal screens*

*Paper Industry Orifice Wear Plate*



*Secondary Pulper Lining*



*Hydropulper lined with AbrasaPlate wear plates, with AbrasaPlate-X cross hatch baffle plates*



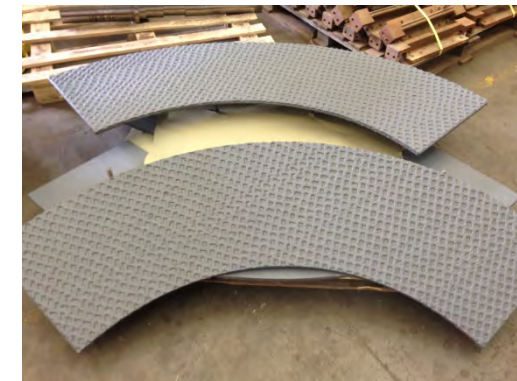


**Product:** *AbrasaPlate-X™ Cross Hatch Wear Plate*

**Industries:** Various Industries

**General Overview:** A general purpose chrome-carbide overlay plate suitable for application in various positions. High impact and abrasion resistance

**Expected life extension:** 4+



Cross hatch AbrasaPlate is light weight, and outstanding for high impact applications. It is made of mild steel backing, with a weld overlay chrome carbide hardfacing, then a 3mm thick hardfaced cross hatch pattern.

The cross hatch pattern enables bulk solids to fill up depressions in the surface, and then self-protect.

It also provides outstanding impact resistance.





**Product:** *AbrasaPipe™ Wear Pipe*

**Industries:** Mining, Cement, Mineral Preparation, Power, Pulp & Paper

**General Overview:** A hardfaced pipe available in all common sizes, with hardfacing either internal or external.

**Expected life extension:** 4+



- Internally or externally hardfaced pipe
- Same composition as AbrasaPlate
- All standard pipe sizes available
- Standard lengths up to 12m available
- Smooth overlay
- Bends and transitions also available
- Very small diameters available
- Hardfaced joins and neck rings available



### Standard Pipe Sizes

mm	Inch	OD	ID	Internal Hardfacing (mm)
63	2.5	73	52	3
75	3	89	72	3
90	3.5	102	86	3
100	4	114	98	3
150	6	168	150	3
200	8	219	197	4
250	10	273	249	4
300	12	324	297	4



Custom pipe sizes are also available, with multiple layers of hardfacing.

**Product:** Shaft/Journal repair

**Industries:** All industries

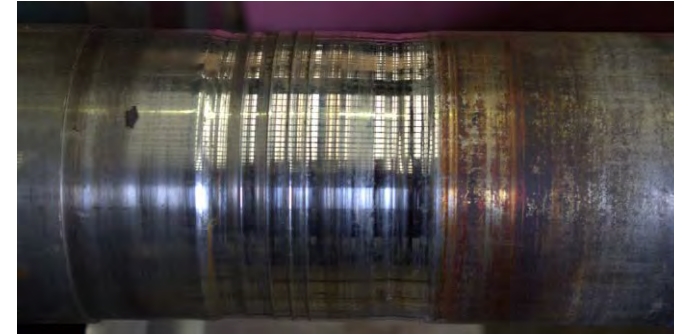
**General Overview:** All shafts and journals are repairable, either just for dimensional restoration, or for added protection with hardfacing

**Expected life extension:** 1-6

- Metal spray repair of worn shafts
- Cold-spray process – no induced stresses
- No heat treatment required
- Dimensional restoration of bearing journals
- Hardfacing for seal journals
- Often cheaper than shaft replacement
- Fast turnaround possible

#### Shaft Types

Armature shafts  
Commutator shafts  
Crusher shafts  
Distributor shafts  
Drum shafts  
Eccentric shafts  
Feed roller shafts  
Gear shafts  
Paper roll shafts  
Pump shafts  
Refiner shafts  
Steel roll shafts  
Stub shafts  
Tapered shafts  
Turbine shafts  
Winder shafts



Worn journal





**Product:** Vacuum Pumps

**Industries:** Ore Processing, Pulp & Paper, Mining, Food Processing, General Industry

**General Overview:** Heavy duty vacuum pumps manufactured or repaired. Suitable for the harshest environments

**Expected life extension:** 4-8 times

- Full overhaul capabilities
- Dimensional restoration of worn components
- Hardfacing of cones, rotors, housings
- Specific application expertise
- Weld overlay, composite, thermal spray coatings as required
- Testing capabilities
- Non-stick coatings to prevent internal build-up of scale



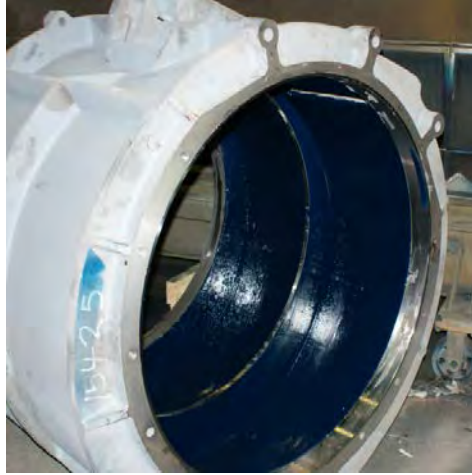


**Product:** Vacuum Pumps

**Industries:** Ore Processing, Pulp & Paper, Mining, Food Processing, General Industry

**General Overview:** Heavy duty vacuum pumps manufactured or repaired. Suitable for the harshest environments

**Expected life extension:** 4-8 times





**Product:** Pump Repairs

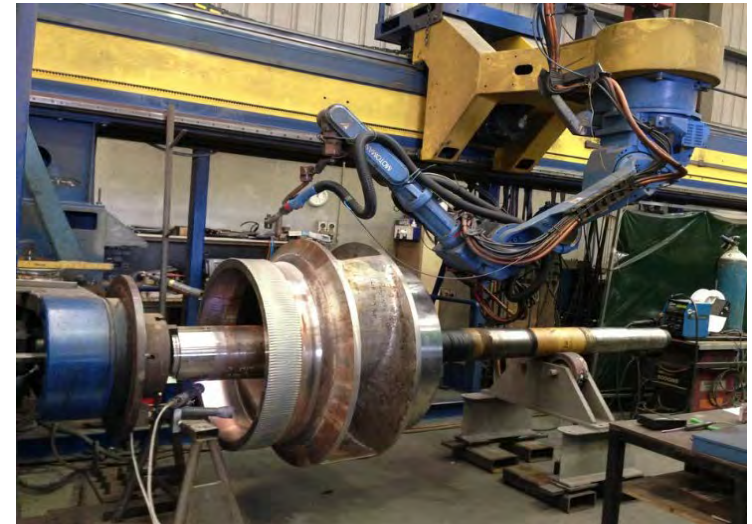
**Industries:** General Industry, Pulp & Paper, Mining, Food Processing

**General Overview:** All parts of pumps repaired and restored; longer life than new pumps, saving you money!

**Expected life extension:** 1-8 times, depending on options



- Precision Machining and grinding
- Weld repairs
- Metal spray coatings
- Composite Loctite coatings (Approved applicator)
- Heavy duty solutions
- Full overhaul
- Testing available
- High temperature applications
- Abrasive media applications
- Robotic weld repairs





**Product:** Loctite Composite Coatings

**Industries:** General Industry, Pulp & Paper, Mining, Food Processing

**General Overview:** All parts of pumps repaired and restored; longer life than new pumps, saving you money!

**Expected life extension:** 1-8 times, depending on options



**Avweld are approved applicators of Loctite Composites.**

Loctite composites utilise world-leading adhesive technologies to provide repair and coating options for all types of industrial machinery. **Composites are available for repair of metal, concrete, rubber and plastics.**

Brand new technology for ease of application makes Loctite Composites very competitive.

Loctite Composites can be applied by Avweld, or purchased for self application by our customers. On-site training is available free of charge.

**Full Loctite Composites range is available, including:**

- Loctite Nordbak Wearing Compound
- Loctite Nordbak Fast Cure Wearing Compound
- Loctite Nordbak Brushable Ceramic
- Loctite PC 7255 Sprayable Ceramic
- Loctite Nordbak Chemical Resistant Coating
- Loctite Fixmaster Rapid Rubber Repair Kit
- Loctite Fixmaster Superior Metal
- Loctite Fixmaster Magna-Crete
- Loctite High Impact Crusher Backing
- Loctite Pipe Repair Kit



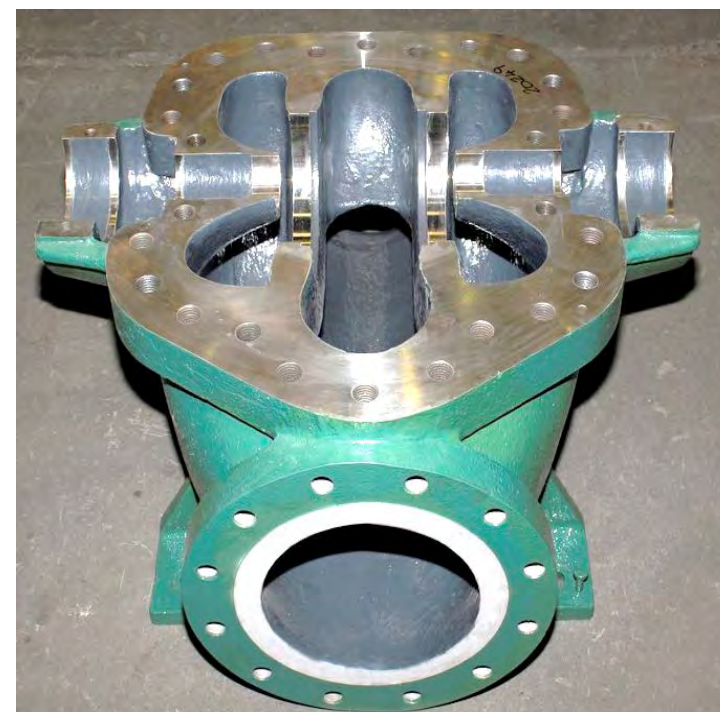
Above: Worn out pump impeller before repair.

Below: After repair with Loctite Wearing Compound and PC 7255 Sprayable Ceramic



**Henkel** Excellence is our Passion

**LOCTITE**  
Approved Applicator





**Product:** Pump Sleeves/Liners

**Industries:** General Industry, Pulp & Paper, Mining, Food Processing

**General Overview:** All parts of pumps repaired and restored; longer life than new pumps, saving you money!

**Expected life extension:** 4+

- New manufacture and repair
- Sealing sleeves
- Manufacture from carbon steel, stainless steel, duplex, bronze
- Hardfaced with tungsten carbide HVOF, Chrome-boron, chrome oxide ceramic
- Economical option to repair old sleeves
- Improve seal life with longer life sleeve surface



**Product:** WoodChip Components

**Industries:** WoodChip, Timber, MDF, Particleboard

**General Overview:** Highest wearing components coated with proprietary materials to increase life massively over *any* other product available in Australia.

**Expected life extension:** 10++



- Supplying all wearing consumables for woodchippers
- Impact resistant weld overlay coatings for longer life available. Proven in Australia's biggest chippers



**Avweld Can Supply:**

Chipper knives

Counter Knives

Face Plates

Knife Clamps

Chip Deflectors

Chip Pocket Liners

Bed Knives

Anvils

Chip Breakers

Belly Bands

Any other wear components required





**Product:** *Knives*

**Industries:** Pulp and Paper, timber, steel, plastics

**General Overview:** High quality knives designed for increasing performance of chippers and cutters

**Expected life extension:** 50%



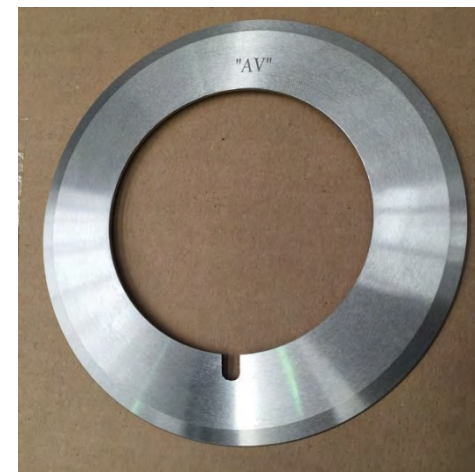
- Knives manufactured new from quality tool steel
- Cryogenic treatment available
- Material selection advice available for broad range of applications
- Knives hardfaced using tungsten carbide and metal spray options

**Industries**

Woodchip  
Steel  
Plastics  
Paper  
Recycling  
Printing  
Packaging

**Knives**

Chipper Knives  
Counter Knives  
Bed Knives  
Top Slitter  
Knives  
Bottom Slitter  
Knives  
Guillotine Knives  
Tube Slitter  
Knives



**Product:** *DuraTrax™ Super-Polymer Roll Covers*
**Industries:** Pulp & Paper, Steel, Aluminium, Board, Food Processing, Plastic Film industries

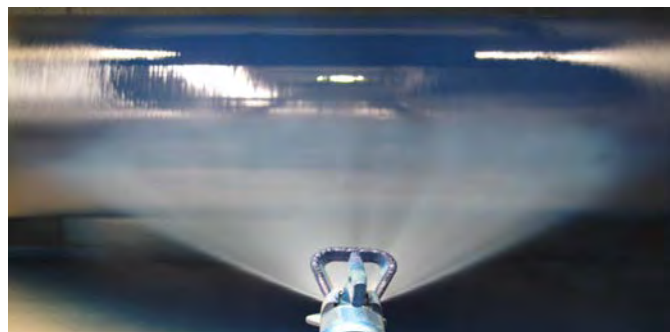
**General Overview:** Revolutionary range of Super-polymer roll covers provide excellent abrasion and wear resistance, AND improved performance over rubber

**Expected life extension:** 2+


Avweld have been spraying *DuraTrax™* super-polymer roll covers in the Australian and South-East Asian pulp and paper industries since 2008. These revolutionary covers outperform rubber covers and other polyurethane covers in many ways. The spraying process leads them to have unparalleled bond strength. Hydrophobic covers don't absorb any moisture. Softer covers with **better wear resistance** mean that the covers last longer, have **better traction**, are **less wearing on felts and wires**, and require **less energy to run**. Various specialised covers are good for different positions:

All Avweld *DuraTrax™* roll covers come with *HeadKote™* polymer head protection system to protect the shell from corrosion ingress. This ensures there is never any edge lifting, and your covers last even longer.

Please see our brochure "DuraTrax™ Roll Covers" for more information.



Cover	Positions	Hardness	Attributes
<b>WireMax™</b>	Wire Drive Rolls, Wire Turn Rolls, Breast Rolls, Forming Rolls, Other non-nipped rolls	1-25P&J	Superior traction and durability, hydrophobic, no edge-lifting
<b>FeltMax™</b>	Wet and dry felt rolls	1P&J	Designed for abrasion resistance and excellent traction in high temperature felt sections up to 150°C.
<b>SlickMax™</b>	Dryer-Felt rolls, forming rolls, guide rolls, Chemi-washer rolls, lead in/out rolls, other non-nipped rolls	1-2P&J	Embedded with UHMW particles for excellent sheet release and non-stick properties
<b>PressMax™</b>	Press Rolls	5-150P&J	Excellent energy release properties and abrasion resistance
<b>CoronaMax™</b>	Corona Rolls	92 Shore A	Extreme dielectric properties for plastic film rolls
<b>ReelXtreme™</b>	Reel Spools	5-60P&J	Extreme energy absorption ensure outstanding spool ups – minimising sheet wastage. Resistance to cuts and tears from slabbing-off.
<b>WebPress Xtreme™</b>	High-abrasion suffering rolls	1P&J	Embedded with chrome-carbide nano-particles for positions experiencing extreme abrasion
<b>SteelXtreme™</b>	Pinch rolls, guide rolls, idler rolls, squeeze rolls	80-100 Shore A	Superior traction and wear resistance for steel processing rolls



**Product:** DuraTrax Super-Polymer Roll Covers

**Industries:** Pulp & Paper, Steel, Aluminium, Board, Food Processing, Plastic Film industries

**General Overview:** Revolutionary range of Super-polymer roll covers provide excellent abrasion and wear resistance, AND improved performance over rubber

**Expected life extension:** 2+



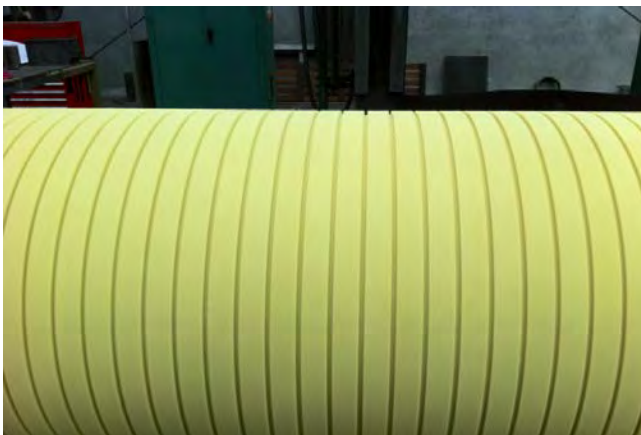
*Avweld Manufactured Reel Spool with a ReelExtreme™ cover*



*15 reel spools manufactured by Avweld*



*Chemiwasher roll with a WireMax™ cover*



*All covers can be grooved to specification as in this particle-board sander roll*



*The spraying process takes less than an hour, even for the largest rolls. This ensures a rapid turn-around.*



*A wire-drive roll covered with WireMax™ with HeadKote™ head protection, ready for dispatch*



**Product:** *PulleyExtreme™* Conveyor Pulley Lagging

**Industries:** Bulk Handling, Mining

**General Overview:** Awmeld's PulleyExtreme conveyor pulley lagging provides outstanding traction with far less wear than rubber lagging. Huge life extensions save down time and change-out costs

**Expected life extension:** 4-10



- Super heavy duty polyurethane conveyor pulley lagging
- Idea for the most difficult wear applications
- Highly successful in Pilbara iron mines
- Spray-on super-polymer lining
- Extremely high bond strength – never disbonds
- Can be grooved as required
- Longest life lagging available on the market



*A worn rubber lagging prior to repair*

*A 950mm Drive pulley with PulleyExtreme™ lagging*





<b>Product:</b>	<b>Sander Drums</b>
<b>Industries:</b>	MDF, Particleboard
<b>General Overview:</b>	Revolutionary new material and application procedure for longest life sander drums available on the market
<b>Expected life extension:</b>	4-10



Using our 9-axis robotic welding cells, Avweld have combined our advanced materials and processes to develop a combination of properties that make our reconditioned (or new) sander drums the best available in Australia. The sander drums operate in a harsh environment, with abrasive saw-dust causing havoc with associated parts. But now, after getting a sander drum coated with Avweld's AV2000 *WearMax Xtreme™* coating, you can set-and-forget. Saving you drum change outs, increasing performance, and of course, saving you money.

The robotic application means that minimal material needs to be removed after welding, that the helix is identical every time, the edges are square, and your sander-drum can operate at its maximum efficiency, for much longer.

**Other services to the MDF and Particle Board industries include repair and manufacture of:**

PZ, PZK flaker wear rings

PZ, PZK flaker housings

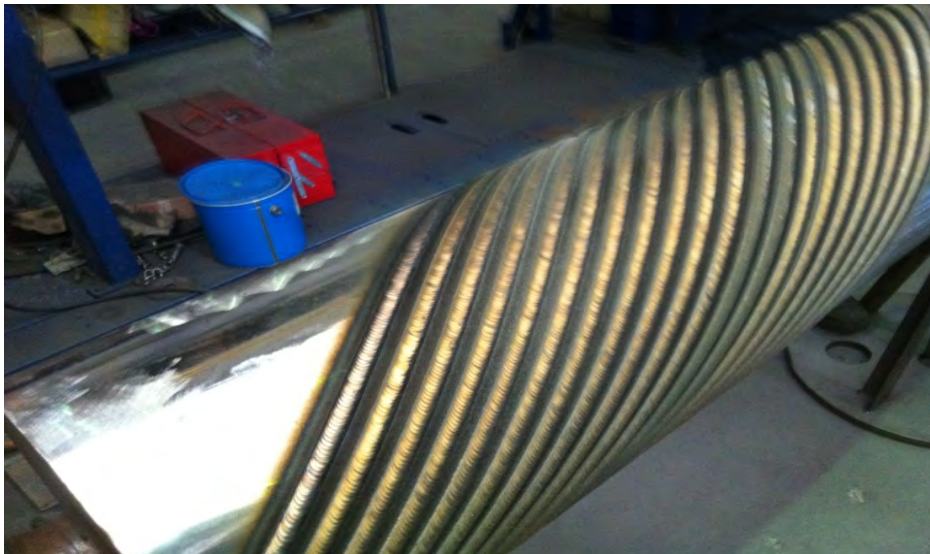
All types of glue rings, paddles, horns

Cyclones

Dryer Rolls

Hoggers

Refiner Sleeves



*As welded with AV2000 WearMax Xtreme™*



*After diamond grinding*

**Product:** Metallic Roll Coatings

**Industries:** Pulp & Paper, Steel, Aluminium, Board, Food Processing,

**General Overview:** Highest quality tungsten carbide roll covers offer extreme abrasion resistance

**Expected life extension:** 1-10



- Precision grinding, machining, coatings
- Super finishing – optical mirror finish possible
- Dimensional restoration, wear resistant coatings, non-stick coatings
- Tungsten carbide, chrome carbide, ceramic, bronze, stainless steel coatings
- PTFE (Teflon™) coatings for non-stick applications





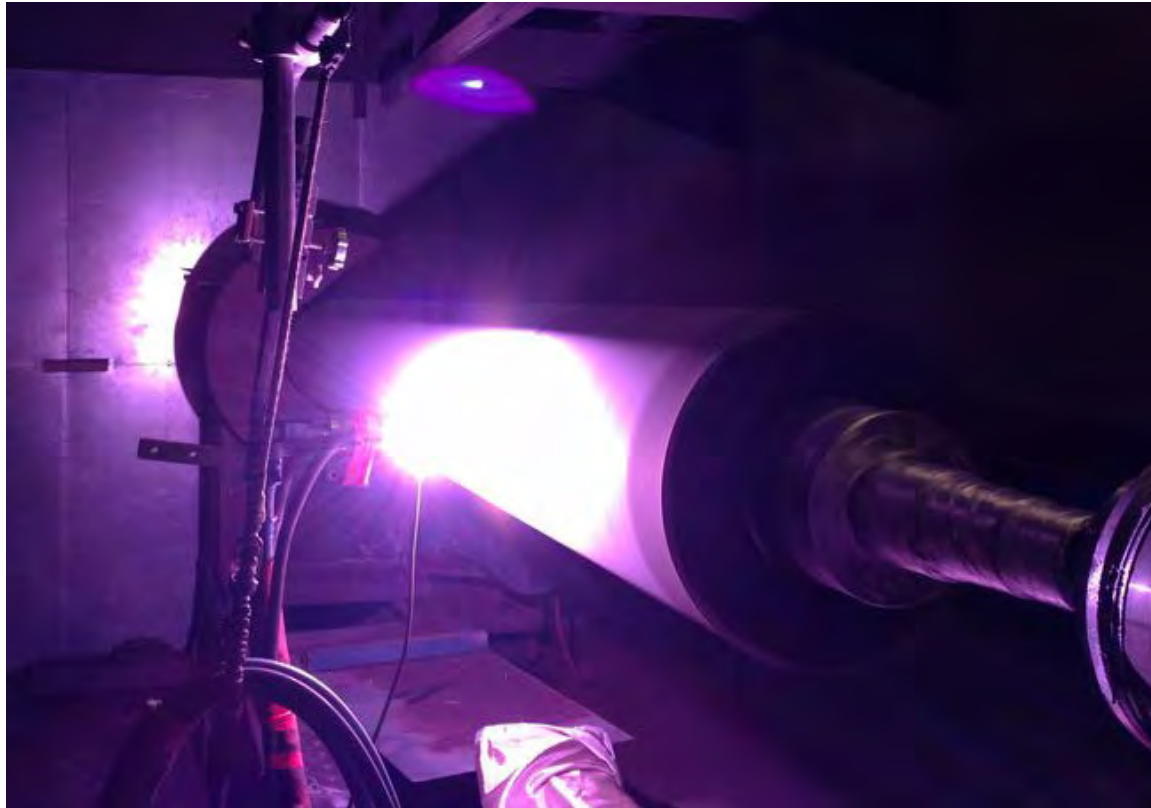
**Product:** Ceramic Roll Coatings

**Industries:** Pulp & Paper, Board, Printing

**General Overview:** Ceramic rolls for printing, paper industries.

**Expected life extension:** 1-10

- DC Plasma-applied ceramic coatings
- Hard coatings for corrosion/wear resistance
- Can be super-finished to mirror
- Low porosity coatings



<b>Product:</b>	<b>Hydraulic Rams, Pistons, Chrome Replacement Coatings</b>
<b>Industries:</b>	MDF, Particleboard, Steel, earth moving, general engineering, mining
<b>General Overview:</b>	Tungsten carbide coating of cylinder surfaces for longest life possible, highly engineered bushings and seals
<b>Expected life extension:</b>	4-10

- Wear resistant coatings for hydraulic pistons
- Replacements for traditional hardchrome coatings
- High density, low porosity, high wear resistant coatings
- Can be superfinished to optical mirror finish
- Increased seal life
- Materials: Tungsten carbide, chrome carbide





**Product:** Screws

**Industries:** Pulp & Paper, recycling, bulk material handling, MDF, Particleboard, Petrochemical, Cement, General Industry

**General Overview:** Wear-solutions for all screws, from mild corrosion to the most severe erosion

**Expected life extension:** 2-10

- Manufacture and refurbishment of all size screws
- AbrasaPlate screw flights
- PTA tungsten carbide weld overlay to flights and cores
- Robotic application
- Supply of replacement flights
- Chrome or Tungsten coatings
- Loctite Composite coatings





**Product:** Bearing chocks

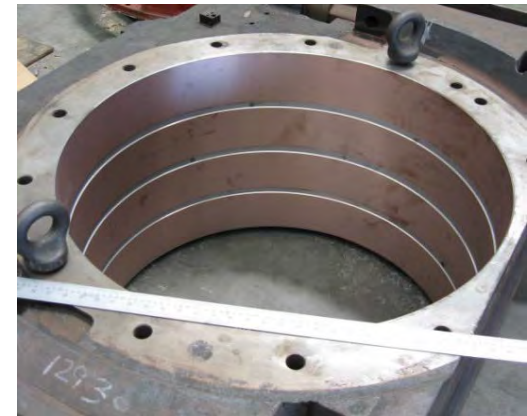
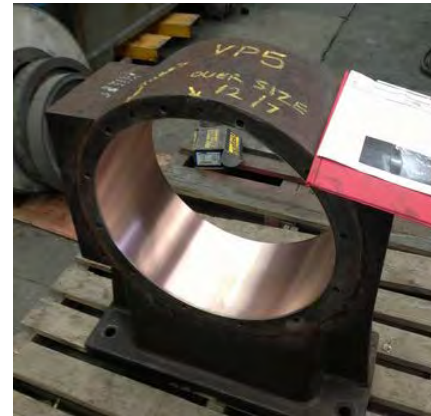
**Industries:** Steel manufacturing, general industries

**General Overview:** For a fraction of the cost of a new bearing chock, Avweld can rebuild the critical dimensions to tight tolerance, generally with superior performance to OEM parts

**Expected life extension:** 1+



- Any size bearing chocks/chucks can be refurbished
- Often cheaper than new chocks
- Fast turnaround
- Precision machining





**Product:** Grip coatings / Slip Coatings

**Industries:** Steel, general industry

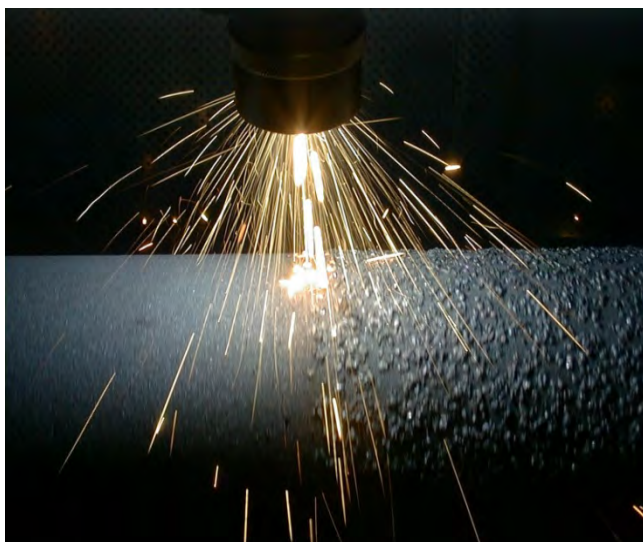
**General Overview:** Awmeld have a range of high-friction coatings for various applications in steel manufacturing and other industries.

**Expected life extension:** 1+

- Rough coatings for grip application
- Smooth coatings for non-stick applications
- Wear resistant smooth coatings, incorporating PTFE and ceramics for combinations of long life and low friction



Non-stick coatings in vacuum pumps prevent build-up of lime scale



**Product:** Fans

**Industries:** Mining, Cement, General Industries

**General Overview:** Avweld have a range of wear-prevention solutions for fans of all shapes and sizes, including both refurbishment and manufacturing.



- Manufacture, Repair and Lining of all fan types
- Supply and installation of fan wear plates

#### Hardfacing options:

- AbrasaPlate™: Fans can be manufactured entirely from wear resistant chrome carbide plate
- AV72 hardfacing: Arc-sprayed chrome boron for general purpose wear prevention
- AV100 hardfacing: HVOF applied tungsten carbide for extreme wear resistance
- Loctite Composite Coatings: Economical and lightweight, without sacrificing performance





**Product:** AbrasaStuds™

**Industries:** Mining, Quarrying, Earth Moving

**General Overview:** Wear-studs for high impact abrasion resistance in heavy applications

**Expected life extension:** 4-8 times



- Heavy duty alloy and carbide studs provide outstanding wear resistance in demanding applications
- Applied using stud-welding process
- Provides “self-protecting” layer due to voids between studs
- Replacement studs can be applied directly over worn out studs

#### Standard Sizes

16mm

20mm

#### Common Applications

Loader, Excavator, Bagger and Face  
Shovel Buckets

Truck Trays

Dozer Blades and Push arms

Crusher Wear Parts

Feed Chutes

Ground Engaging Tools



**Product:** **Screens**

**Industries:** Pulp and Paper, Mining, Food

**General Overview:** The absolute toughest pulping screens available

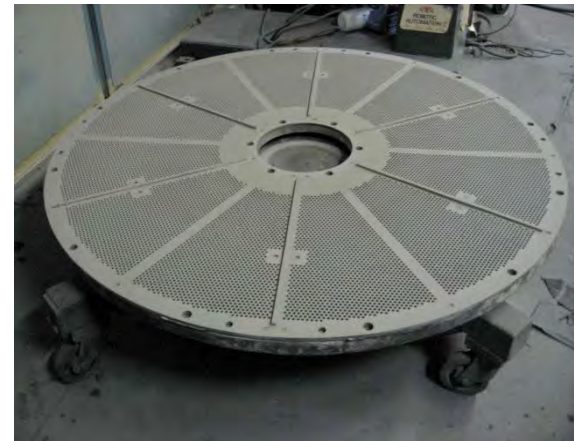
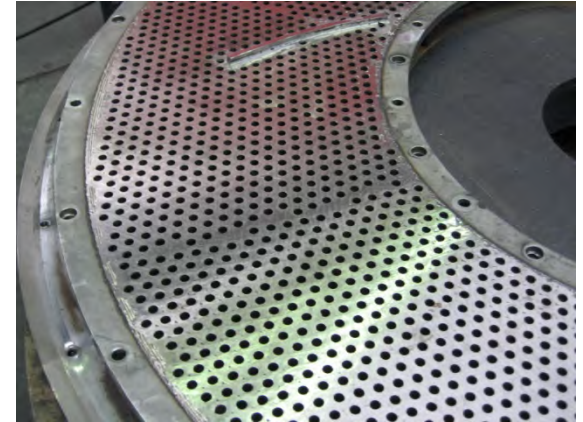
**Expected life extension:** 6 times the life of stainless steel screen plates



- Tungsten carbide weld overlayed screens
- Retain sharp edges for longer
- Also available in lower grades (stainless steel, Q&T plate)
- Manufacture and repair

**Suitable for all flat screens, including:**

Pulpers  
Pulper-emptying  
Turbo-separator  
Reject-separator  
Reject-sorter  
Fiberizer  
Screw Press  
Reject Press  
All Makes and Models



Screens manufactured and hardfaced by Avweld



<b>Product:</b>	<b>Valves</b>
<b>Industries:</b>	Various
<b>General Overview:</b>	Repair and manufacture of ball valves, plug valves, seats, valve housings, stems and yokes using specifically engineered materials for particular applications
<b>Expected life extension:</b>	2-10

- Any size valves (2" – 60")
- Repair and hardfacing
- Stellite coatings
- Tungsten carbide
- Chrome carbide
- Specialise in heavy duty valves
- High temperature applications
- Corrosive environments



Cast pure Stellite valves



Robotically welded ball valve



600mm Lunkenheimer Valve bodies  
ready for hardfacing with AV10™



Valve-plug PTA welded with Stellite

## Contact Details



Avweld Australasia Pty Ltd  
25 Raymond Rd,  
Laverton North,  
Vic, 3026, Australia  
ABN: 39 705 101 712

[www.avweld.com.au](http://www.avweld.com.au)  
[sales@avweld.com](mailto:sales@avweld.com)  
Ph: +61 3 9369 0088  
Fax: +61 3 9369 0188  
ACN: 066232559



Phillip Bond  
Managing Director  
Ph: +61 413 431 800  
[philbond@avweld.com](mailto:philbond@avweld.com)



Dan McEldrew  
Technical Manager  
Ph: +61 414 258 739  
[dan@avweld.com](mailto:dan@avweld.com)



Jason Bond  
Business Development  
Ph: +61 413 431 894  
[jasonbond@avweld.com](mailto:jasonbond@avweld.com)



Rohdian  
Sales Engineer Indonesia  
Ph: +62 815 953 2471  
[rohedian@avweld.com](mailto:rohedian@avweld.com)



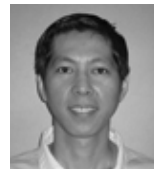
Eddy Sperber  
General Manager  
Ph: +61 407 071 662  
[eddy@avweld.com](mailto:eddy@avweld.com)



George Abraham  
Sales Engineer  
Ph: +61 413 431 888  
[george@avweld.com](mailto:george@avweld.com)



David Camilleri  
Sales Engineer  
Ph: +61 431 249 299  
[davidc@avweld.com](mailto:davidc@avweld.com)



Rex Fabian  
Production Engineer  
Ph: +61 402 134 473  
[rexf@avweld.com](mailto:rexf@avweld.com)

