

Grizzly Bar Liners

Grizzly Bar liners come with sloped top white iron cast shape, to provide the best combination of impact and wear resistant materials for protecting your screen and crash decks. Contact your Alloys Sales Engineer for advice on the best type of liner for your application



Part No.	TYPE	A	B	C	D	E	Weight (kgs)
Type A - 150/50 taper							
DLP 2067	A	150.0	137.5	-	-	-	13.6
DLP 2068	A	137.5	125.0	-	-	-	12.5
DLP 2069	A	125.0	112.5	-	-	-	11.2
DLP 2070	A	112.5	100.0	-	-	-	10.0
DLP 2071	A	100.0	87.5	-	-	-	8.8
DLP 2072	A	87.5	75.0	-	-	-	7.5
DLP 2073	A	75.0	62.5	-	-	-	6.3
DLP 2074	A	62.5	50.0	-	-	-	5.1
Type B - 150/75 taper							
DLP 2075	B	150	141	-	-	-	13.8
DLP 2076	B	141	131	-	-	-	12.9
DLP 2077	B	131	122	-	-	-	11.9
DLP 2078	B	122	113	-	-	-	11.1
DLP 2079	B	113	103	-	-	-	10.1
DLP 2080	B	103	94	-	-	-	9.2
DLP 2081	B	94	84	-	-	-	8.3
DLP 2082	B	84	75	-	-	-	7.4
Type C - 180/120 taper							
DLP 2083	C	180	171	-	-	-	18.5
DLP 2084	C	171	163	-	-	-	17.6
DLP 2085	C	163	154	-	-	-	16.7
DLP 2086	C	154	146	-	-	-	15.8
DLP 2087	C	146	137	-	-	-	14.9
DLP 2088	C	137	128	-	-	-	13.9
DLP 2089	C	128	120	-	-	-	13.0



ISO 9001
BUREAU VERITAS
Certification



Chocky Blocks

Chromium-Molybdenum White Iron Castings

Avweld Australasia Pty Ltd
25 Raymond Road, Laverton North,
VIC 3026 Australia
T +61 3 9369 0088

E sales@avweld.com
W www.avweld.com.au

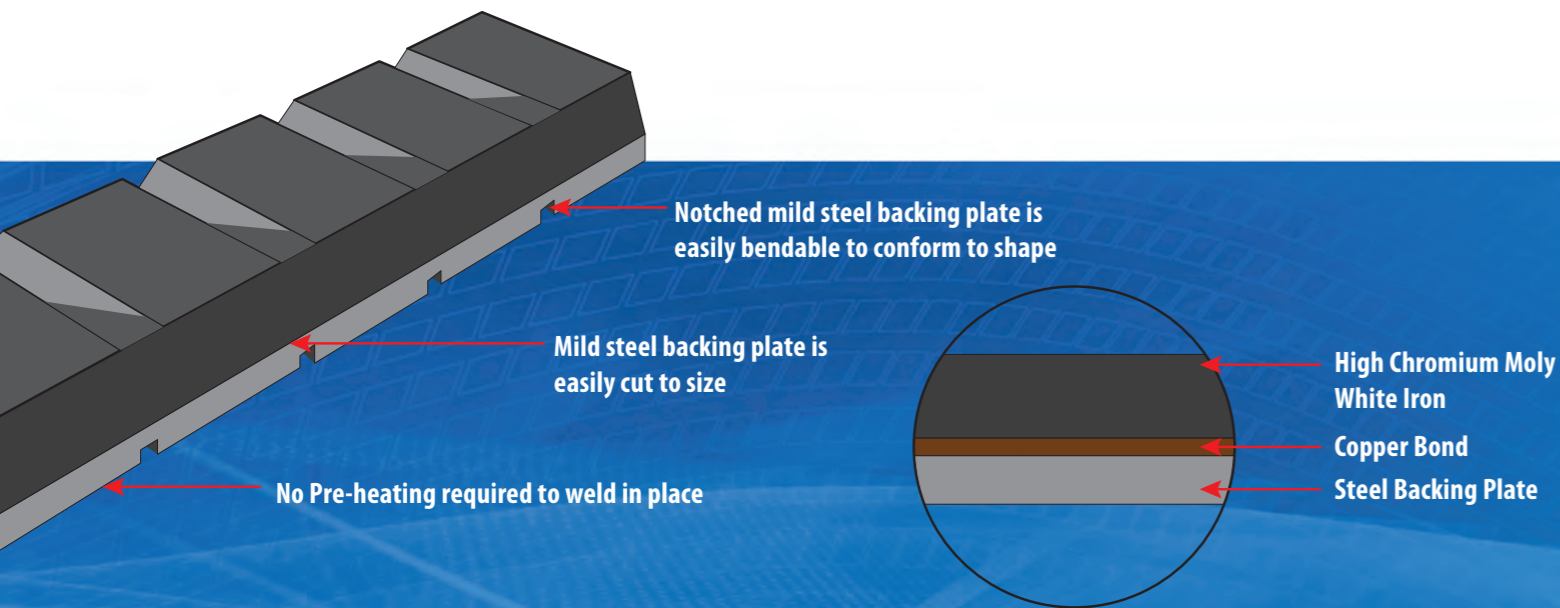
Alloys International Australasia Pty Ltd
25 Raymond Road, Laverton North,
VIC 3026 Australia
T +61 3 8368 2222

E sales@alloysint.com.au
W www.alloysint.com.au

AVWELD
Leadership in Life Extension

Alloys
INTERNATIONAL
AUSTRALASIA PTY LTD

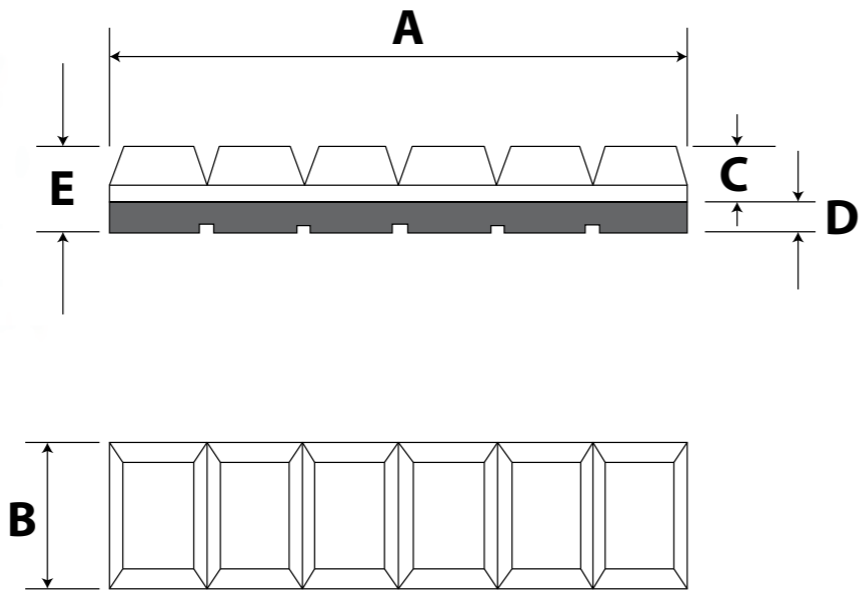
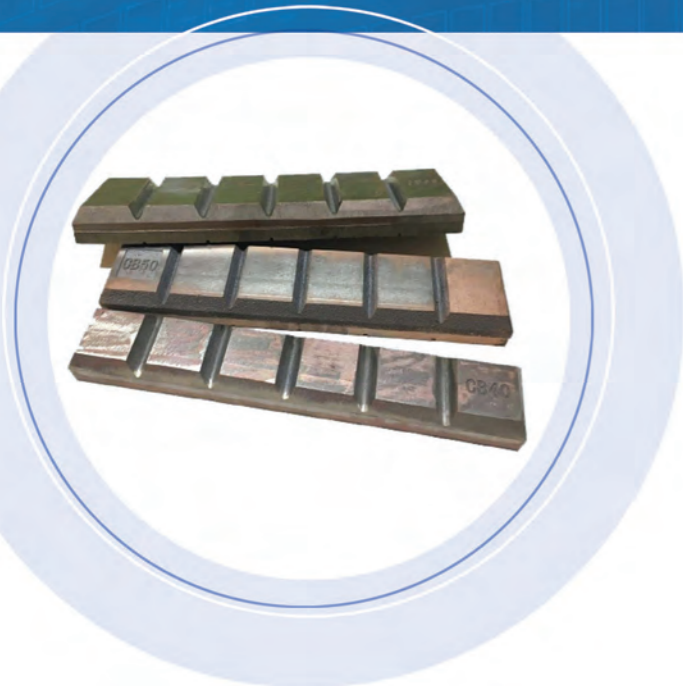
ChockyBlocks look just like they sound. The notched bars can be easily broken into small segments for welding onto round or varied surfaces. They are suitable for fixed and mobile plant, such as buckets, trays, chutes, crushers and impact plates.



White Iron Wear Products

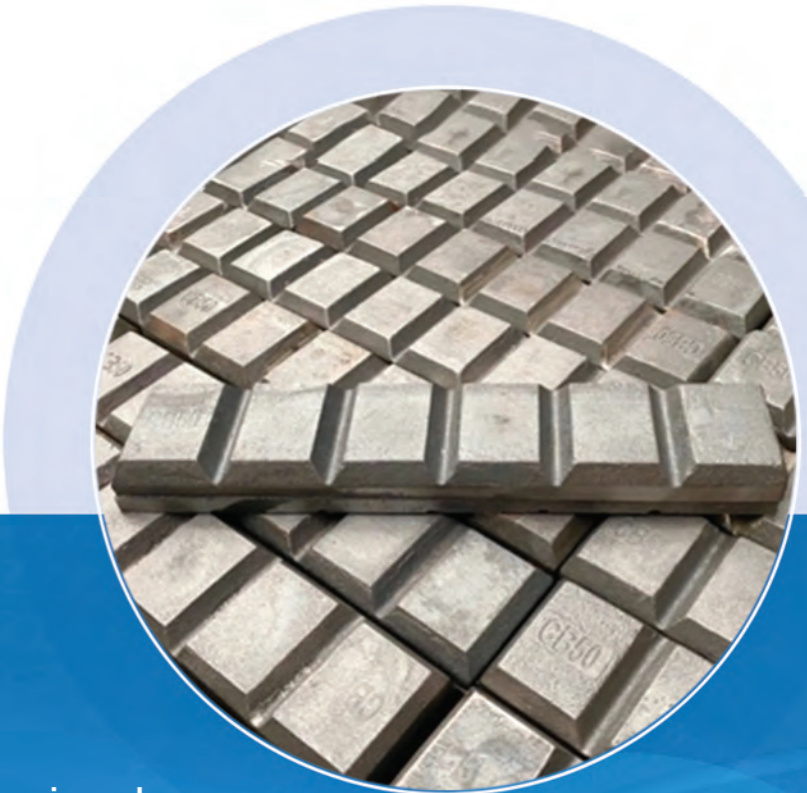
For high impact abrasion applications in material handling, you can't go past Alloys International's white iron wear products. The Chromium-Molybdenum white iron castings, are vacuum brazed onto a mild steel backing plate. The mild steel can be welded in situ for quick attachment to the wearing surface. No pre- or post- heat treatment required.

The high chromium and molybdenum casting incorporates super hard chromium carbides, 1500HV, in a martensitic matrix. Available in a wide range of sizes and shapes, the white iron products are especially suited to high impact and abrasion applications.



KEY POINTS

- Immense ability to extend your equipment's wear life.
- Patch holes, coverkey points and are quick to install.
- Cost effective by fixing a patch rather than replacing a whole section.



Advantages

Longer wear life:
outlast Q&T steel.

Reduced downtime:
improve equipment life and require less maintenance and inspections.

Easy to fit:
No special qualifications required to weld. As an alternative to welding, studs can be attached on request.

Flexibility:
we can supply block products for attachment in the field as required, or they can be pre-attached to equipment.

Adaptability:
available in a wide range of dimensions and can be adapted to suit a wide range of operating conditions.



Part No.	A (mm)	B (mm)	C (mm)	D (mm)	E (mm)	Weight (kg)
AI-CB25-N	240	25	15	8	23	0.90
AI-CB40-N	240	40	15	8	23	1.50
AI-CB50-N	240	50	15	8	23	1.90
AI-CB65-N	240	65	15	8	23	2.50
AI-CB90-N	240	90	15	8	23	3.50
AI-CB100-N	240	100	15	8	23	3.90
AI-CB130-N	240	130	15	8	23	5.15
AI-CB150-N	240	150	15	8	23	6.20